



EMBRACE VILLAGE

PROSPECTUS



Contents

Section 1:	Who We Are.....	pg 2
Section 2:	Our Thinking & Motto.....	pg 3
Section 3:	Values.....	pg 4
	WHAT DRIVES US	
Section 4:	What We Drive.....	pg 5
	UN SUSTAINABLE GOALS	
Section 5:	Portfolios.....	pg 6
	1. CHILDREN'S CENTRE	
	2. A MOTHER'S HOPE	
	3. STRIVE TO THRIVE	
	4. FAMILY STRENGTHENING	
	5. COMMUNITY ENGAGEMENT	
	6. SUSTAINABILITY	
Section 6:	Operations & Funding.....	pg 9



SECTION 1

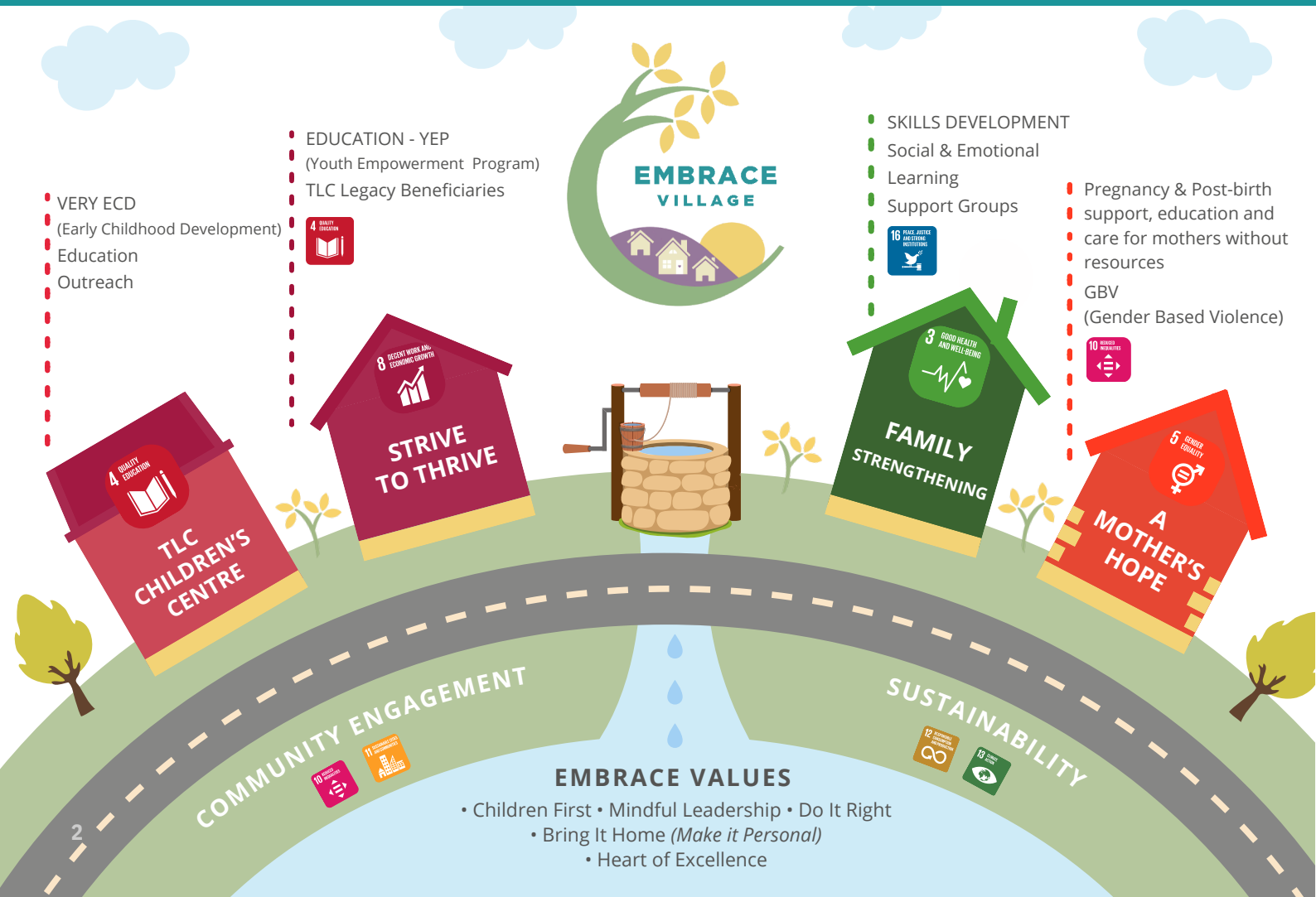
Who We Are

Who is Embrace Village?

Embrace Village is a pioneering, community-driven initiative in South Africa, dedicated to fostering resilience, well-being, and economic empowerment among vulnerable children, families, and elders. Our mission centers on building a sustainable village that not only nurtures individuals but also uplifts the wider community through trauma-informed support, family strengthening, and social entrepreneurship.

Reviving the Village: Our 6 Programs

Embrace Village comprises of six defined programs (Section 5) designed to Revive the Village. Namely: TLC Children’s Centre (ECD), A Mother’s Hope (GBV), Strive to Thrive (YEP), Family Strengthening, Community Engagement and Sustainability. Our “well-th” of interventions and workshops, offered through our various programs, are guided by and drawn from a commitment to our shared values (Section 3). Which ultimately serves to strengthen the community’s ability to not only support children in families, but the wider community as well.





SECTION 2

Our Thinking & Motto

Our Vision

Community cohesion through leadership that inspires.

Our Mission

To lead and inspire community cohesion to the benefit of every child within our sphere of influence.

Our Motto

Reviving The Village

We aim to be part of the community, reweaving the damaged social fabric to strengthen its ability to support children in families so that ultimately every child can be raised in a loving home and never need care in an institutional environment.

A Look Inside the Well

In our village we draw from the well of our core values (Section 3) to guide and inspire how we address the key problem areas that contribute to child neglect and abandonment, and ultimately family breakdown. Reviving the Village means not only strengthening our individual beneficiaries through intentionally scaffolded support, learning and training (see below), but also interweaving strong connections between them for a healthy and integrated community where each group is supported and uplifted by the other.

Developing individuals from a space of low contribution and high dependency toward an empowered space of high contribution and low dependency.



Our Values

What Drives Us



What is our approach when Reviving the Village?

1 Children First

It is always about the children

Whether we are engaging with our clients or beneficiaries, board, staff, volunteers, partners, or supporters, we always seek to give special consideration of how our relationships impact the children within our connected communities.

2 Mindful Leadership

Our leaders serve their community

Regardless of anyone's title within our organisation, all adults need to be mindful of their role as leaders in their spaces. Our children, in our various communities, will seek to model them.

3 Do It Right

We examine our intentions with integrity

With the understanding that secure attachment and the children's best interests come first, we seek to make sure that each action and interaction is done the right way and for the right reasons.

4 Bring it Home

Connection is built on relationships

MAKE IT PERSONAL - We make each relationship personal because committed, emotional investment and connected interactions with all those in our community help to bolster the resiliency of families and the next generation.

5 Heart of Excellence

Inspiring a care for quality

Encouraging each individual to nurture a "heart of excellence" means that we recognise that excellence happens inside-out, not outside-in. Through leadership that inspires we hope to ignite this heart of excellence in each other as we serve our intergenerational beneficiaries and do our bit to bring communities together.

Trauma Informed Caregiving

In order to reweave the damaged social fabric of the community, we must address the trauma layered through it. If left unaddressed, it has long-lasting effects in not only these communities, but societies at large and beyond. We therefore incorporate the Trauma Informed and Conscious Discipline methodologies into all our interventions and structures, with the main aim of reducing risk and trauma. Our hope is to ideally reduce this risk during the critical first 1,000 days of a baby's life, but it also serves to mitigate trauma already experienced by the older beneficiaries, our management team, caregivers, volunteers and workshop participants all over the world.



What We Drive UN Sustainable Goals

How do we align with the UN Sustainable Development Goals?

The six-fold strategy of Embrace Village aligns directly with key areas of the United Nations Sustainable Development Goals. The Sustainable Development Goals (SDGs), also known as the Global Goals, were adopted by the United Nations in 2015 as a universal call to action to end poverty, protect the planet, and ensure that by 2030 all people enjoy peace and prosperity.

 <p>1 NO POVERTY</p> <p>At Embrace Village, we are committed to No Poverty by addressing poverty's root causes through programs that promote economic empowerment, education, and social support. By equipping families with resources and skills, we help foster self-reliance and break generational poverty cycles.</p>	 <p>2 ZERO HUNGER</p> <p>Ensuring Food Security for vulnerable groups through sustainable agriculture and nutrition programs, our initiatives include community gardens and agricultural skill development, creating consistent food access for infants, children, and families facing hunger.</p>	 <p>3 GOOD HEALTH AND WELL-BEING</p> <p>Health and well-being are prioritized through trauma-informed care, maternal support programs, and early childhood development initiatives. By addressing physical, emotional, and social health, we help vulnerable children and families build stronger, healthier futures.</p>	 <p>4 QUALITY EDUCATION</p> <p>We champion Quality Education by providing access to quality early childhood development. Through caregiver training, mentorship programs, and skill-building initiatives, we empower children and youth to succeed academically, socially, and economically, fostering lifelong learning opportunities.</p>
 <p>5 GENDER EQUALITY</p> <p>We empower women and girls through programs like A Mother's Hope, offering resources, education, and support for pregnant and vulnerable women. We promote Gender Equality by creating opportunities for leadership, skill development, and sustainable livelihoods.</p>	 <p>6 CLEAN WATER AND SANITATION</p> <p>At Embrace Village, we support Clean Water and Sanitation by implementing sustainable water practices within our community, ensuring clean and safe water access. Through education and local initiatives, we promote efficient water use and hygiene awareness for healthier living environments.</p>	 <p>7 AFFORDABLE AND CLEAN ENERGY</p> <p>Contributing to Affordable and Clean Energy by integrating energy-efficient practices and exploring renewable energy options in our community projects. By fostering environmental awareness, we aim to minimize our ecological footprint while inspiring sustainable energy use within our community.</p>	 <p>8 DECENT WORK AND ECONOMIC GROWTH</p> <p>In fostering economic empowerment through skill-building programs, youth empowerment initiatives, and support for social entrepreneurship we support Decent Work and Economic Growth. Equipping individuals with tools for sustainable livelihoods & inclusive economic growth within our community.</p>
 <p>10 REDUCED INEQUALITIES</p> <p>We foster inclusion and Reduce Inequalities, through targeted interventions and support for marginalized groups. Reducing barriers and creating opportunities, ensures that everyone, especially the vulnerable, have equal access to resources and opportunities.</p>	 <p>11 SUSTAINABLE CITIES AND COMMUNITIES</p> <p>Sustainable Cities and Communities are fostered at Embrace Village by creating safe, resilient community spaces through sustainable practices and community engagement initiatives. Our programs strengthen social cohesion, encourage shared responsibility, and inspire sustainable urban development for future generations.</p>	 <p>12 RESPONSIBLE CONSUMPTION AND PRODUCTION</p> <p>By promoting Sustainable Consumption and Production through waste reduction, recycling initiatives, and education on eco-friendly practices. By integrating sustainability into daily operations, we encourage responsible resource use and environmental stewardship within our community.</p>	 <p>13 CLIMATE ACTION</p> <p>Environmental Stewardship is valued by Embrace Village through green initiatives and educational programs on climate resilience. By adopting sustainable practices in our operations, we help build capacity for climate adaptation and mitigate our community's environmental impact.</p>
 <p>15 LIFE ON LAND</p> <p>Through Embrace Village's sustainable agriculture and tree planting projects we play our part in Preserving Biodiversity. As far as possible, our initiatives seek to implement and promote eco-friendly practices that protect natural ecosystems within our community.</p>	 <p>16 PEACE, JUSTICE AND STRONG INSTITUTIONS</p> <p>We advance Peace, Justice and Strong Institutions through our focus on building peaceful and inclusive communities. By offering trauma-informed care, mentorship, and advocacy for vulnerable children and families, we nurture environments of trust, fairness, and justice for sustainable social cohesion.</p>	 <p>17 SDG</p>	



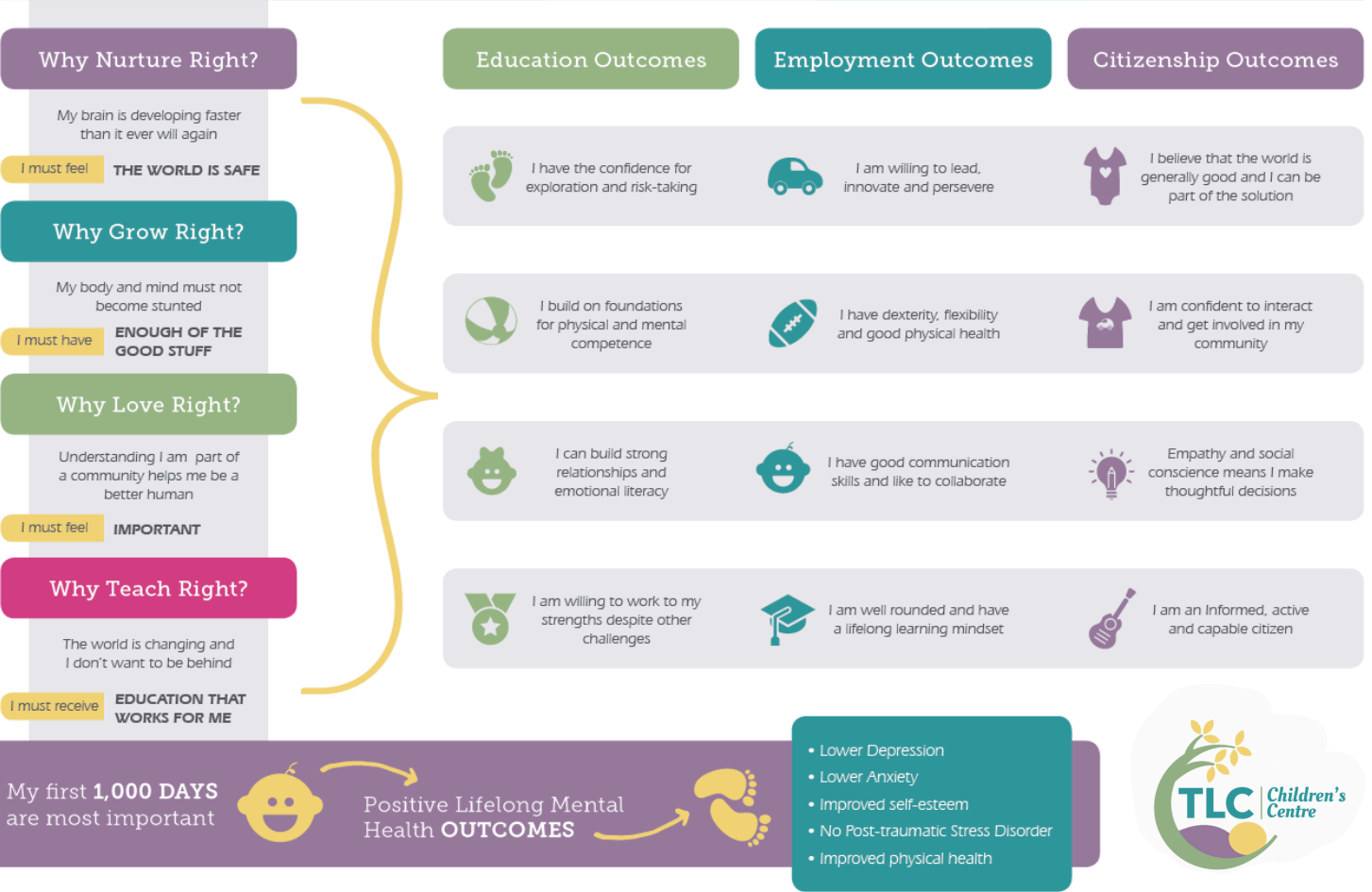
Embrace Village Portfolios

1 TLC Children's Center (ECD)

This is where we started in 1993, taking in the first babies who had nowhere else to go. After more than 30 years of running a residential children's home and placing close to 1000 babies into forever families, TLC has now evolved it's model, by going upstream, to better support vulnerable children and their communities as a registered ECD .

Our evidence-based model of supporting the child is based on empowering vulnerable families in our community; offering them opportunities for growth and development to reinforce family stability. We focus on VECD (Very Early Childhood Development) through a series of interventions aimed at reducing risk and trauma during the critical first 1,000 days of life, and beyond.

Why Very Early Childhood Development Matters | Outcomes for Social Cohesion



Embrace Village Portfolios



2 A Mother's Hope

Our Mother's Hope program aims to break the cycle of trauma that often ends in child abandonment, by providing intentional support to a mother with an unplanned pregnancy who does not have the resource or support she needs.

A program initially piloted under the banner of the Children's Centre we are still testing various iterations of this program to find the most impactful and sustainable interventions. It is our hope that we can empower these women and give them options they may not otherwise have had.



3 Strive to Thrive



The Strive to Thrive program was originally designed to support the "growing up" phase of the children who are permanent beneficiaries in our family, but has since extended to children in our direct community as a youth empowerment program. It educates and nurtures children, ranging from school-aged up to those who have aged out of education, giving them the best chance of trauma-informed social integration. It offers support for those requiring an assisted-living environment, and includes a trained facilitator and individualised skills and support offerings based on each participant's needs and capabilities.

4 Family Strengthening

At Embrace Village, our Family Strengthening program focuses on supporting families through resources, mentorship, and educational initiatives that foster resilient, nurturing environments for children.

By empowering caregivers and providing tools for holistic well-being, we help families overcome obstacles and build lasting foundations of love and security, giving every child the opportunity to thrive.





Embrace Village Portfolios



5 Community Engagement

Through our Community Engagement efforts, Embrace Village cultivates connections that enhance mutual support and shared responsibility. We bring people together through individual and corporate events, workshops, and volunteer opportunities, creating a network of care and fostering a spirit of belonging. Our community-driven approach inspires people to work collaboratively in building a stronger, safer environment for everyone.



5 Sustainability



Embrace Village is dedicated to sustainable practices that empower our community members toward self-reliance. Through social entrepreneurship, skill-building programs, and green initiatives, we foster independence while respecting the environment. By integrating sustainable livelihoods, we ensure that Embrace Village thrives as a lasting, positive force in the lives of all who call it home.





Operations and Funding

Embrace Village comprises of two separate properties in in the quiet village of Walkerville, south of Johannesburg. The main base of operations, at 26A Second Ave, comprises a baby nursery, preschool, therapy room, residential mother’s cottages, staff accommodation, offices, a playground and vegetable garden. The second site hosts a training facility and provides a home and transition housing for our Strive to Thrive participants, and forms part of our agricultural sustainability project, as well as staff accommodation.

EMBRACE VILLAGE

BANKING DETAILS

Account holder: EMBRACE VILLAGE
Account number: 1265211736
Account type: Current account
Bank name: Nedbank
Branch code: 198765

REGISTRATION NUMBERS

NPC number: 2023/776453/08
Income Tax Ref: 9886409185
PBO Number: Pending
 (Currently unable to Issue Tax Receipts)

TLC MINISTRIES






BANKING DETAILS

Account holder: TLC MINISTRIES
Account number: 1385039027
Account type: Current account
Bank name: Nedbank
Branch code: 138537







REGISTRATION NUMBERS

NPO number: 054-364 NPO
Income Tax Ref: 9270154173
PBO Number: 930021186
 (Able to Issue Tax Receipts)





Donation Platforms

-  EV TLC
-  EV TLC
-  TLC
-  TLC
-  TLC

Social Media

-  @EmbraceVillage EV TLC
-  @Embrace Village EV TLC
-  @TLCChildrensCentre TLC
-  @TLCChildrensCentre TLC
-  @TLCChildrensCen TLC
-  @TLCChildrensCentre TLC

Contact Us

-  info@embracevillage.com
-  www.embracevillage.com
-  26a 2nd Ave, Walkerville, Gauteng, RSA
-  +27 11 948 7917